

APM-H.264 quick installation guide

1 Hardware installation

1.1 Open the package and take the ipcam and accessories out, First install the ipcam wireless antenna

1.2 Fix the ip camera, insert one end of the network cable to the camera tail Ethernet card interface, on the other end of the network interface connected to a router or switch.



1.3 The software of IP Camera support windows xp/windows8/windows7 etc. operation system, Pls use the power adapter to connect the DC5V port on the back of the ip camera. Plug the other end to an electrical outlet. Check the card's power indicator light (yellow) and the network indicator (green) is working properly, the camera pan and tilt rotate automatically.



2.2. IE Browser Settings

OCX will be downloaded automatically when users login the IP Camera, so users have to set the IE browser to enable the OCX be downloaded automatically after signing in. Steps as below:

1. Close the firewall of your computer.
2. Change the ActiveX settings, "IE" browser > "Tool" > "Internet Options" > "Security"> "Custom Level" > "ActiveX control and Plug-ins", all the ActiveX options set to be "Enable":

Especially:

Enable: Download unsigned ActiveX controls

Enable: Initialize and script ActiveX controls not marked as safe

Enable: Run ActiveX controls and plu-ins

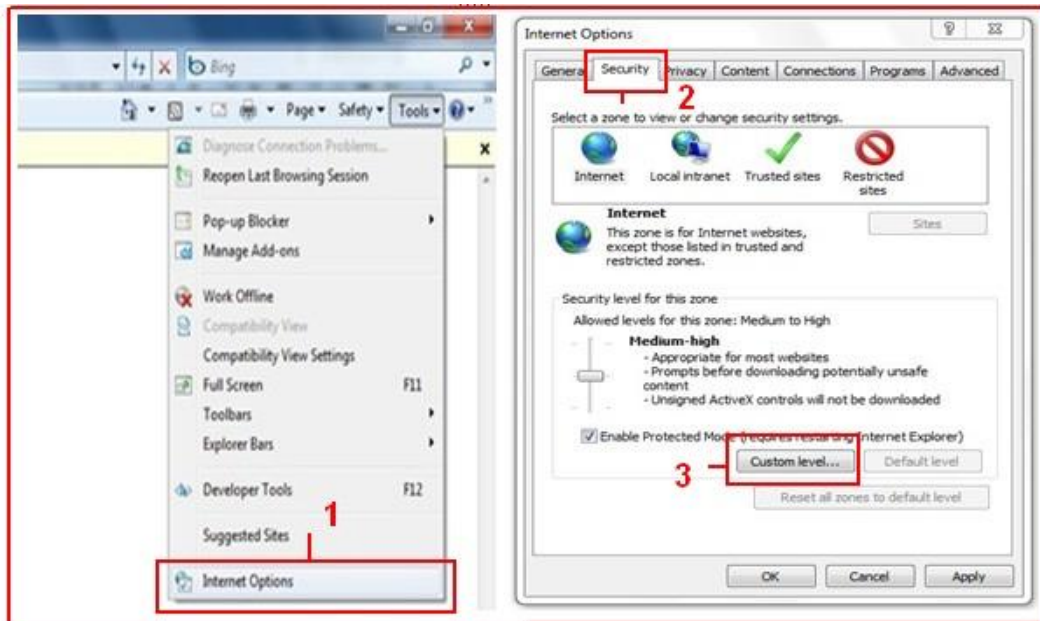


Figure1.3

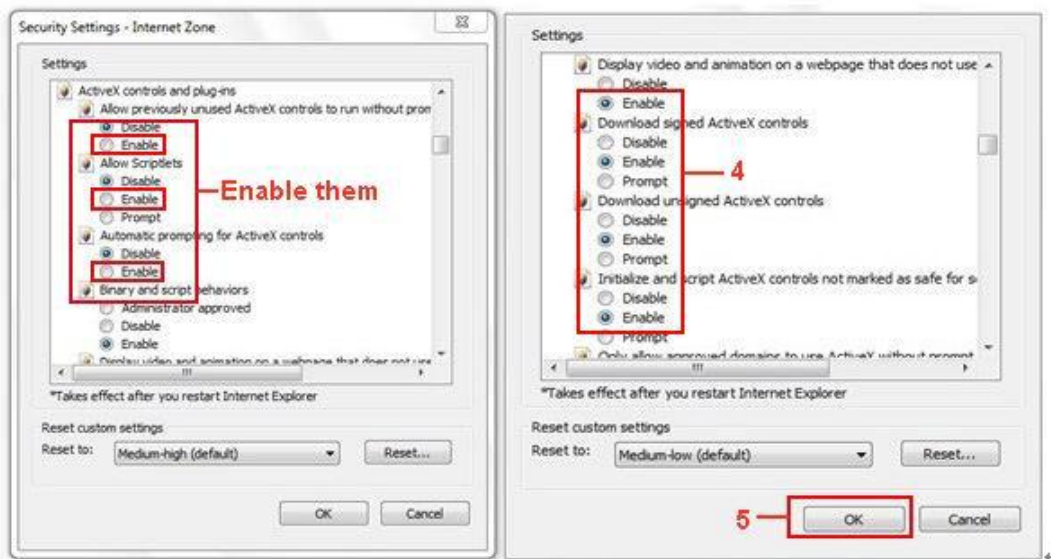
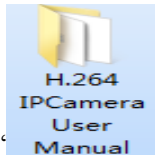


Figure1.4

In addition: you can also click "Start" menu>"Internet Explorer", choose "Internet attributes " to enter, or via "Control Panel" >"Internet Explorer", enter to Security setting.

1.4:Please insert CD into your computer's CD-ROM drive,, pls double click the



“ H.264 IP Camera User Manual ” files

2.4. IPCam IP Address Search Tool

Step 1: Use tool “SearchIPCam.exe” to find IP address of LAN.

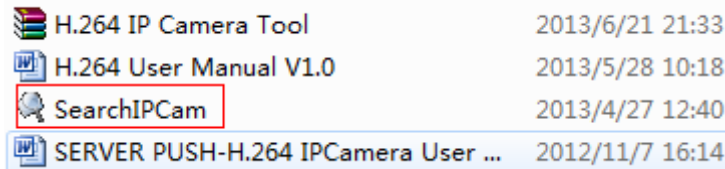


Figure1.5

Step 2: Double click “Search IP Cam”, camera IP & MAC list will be displayed. If you want to re-search, click “Search” again.

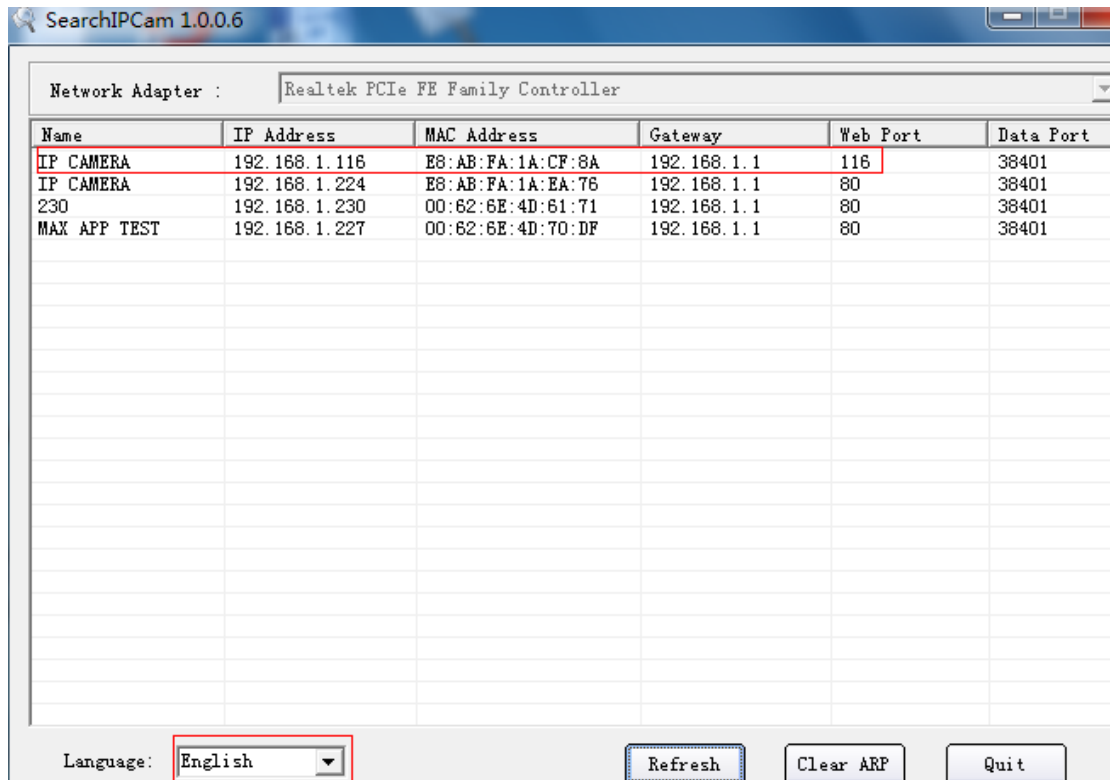


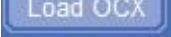
Figure1.6


Step 3: Choose the IP, click “Login” or double click the IP to enter IE login interface.



Figure1.7

2.5. Install the OCX ActiveX

Install the OCX activeX for the first time login; click the  icon on the right bottom,

Download the OCX file , After that, double click to install it automatically.

If you using win7 or win8 , you could be running to the ActiveX as an administrator .

After OCX installed fully, then input the user name and password to login the camera.

3. SOFTWARE OPERATION (IE BROWSER)

Choose the suitable language, input correct user name and password, then click "Login"

User name: admin

Password: admin



: Click to login the IE interface as below:

